

March 2024 Newsletter

St Luke's STL

A United Methodist Church

SPECIAL POINTS OF INTEREST

- Grief Luncheon 2
- Piecemakers 2
- Holy Week Schedule 2
- Thank You 2
- New Staff Person 3
- Lent Bible Study 3
- False Text Messages 3
- UMM 4
- Attention Ladies 4
- UWF 5
- Monthly Mission 5
- Give-A-Meal 5
- March Calendar 6
- Fish Fry 7
- Square Dance Shindig 8
- Healthy Ministries 9
- Prayer List 9
- Celebrations 10
- Ink Cartridges 10
- Stewardship 11
- Re-Sell-It Quarter Sale 11

A Letter from the Pastor

This is a very active and exciting month for St. Luke's United Methodist Church. In this newsletter article I'm going to focus on two themes: first, how we can connect to God through worship; and second, the ways God is encouraging us to invite/bring/welcome people we know to St. Luke's this month.

First, I want to focus on how we can connect to God through worship and service in March. This year Holy Week is early, beginning with Palm Sunday on March 24. We will also have a Maundy Thursday service on March 28 at 7:00 PM, and Good Friday service on March 29 at 7:30 PM, and two Easter Sunday worship services at 8:30 AM and 10:00 AM. Each of these worship services are a way to connect to God in unique ways. Take advantage of these opportunities to recall the story of Christ's last week of ministry and his resurrection that leads us toward eternal grace.

Second, we can find in March ways to invite, bring, and welcome people to St. Luke's. God is encouraging and challenging us to see those around us who need the eternal grace found in Christ's fellowship of believers. Invite folks you know to the Friday Fish Fry! Bring them to one of the Holy Week worship services. Tell them about the Monday Lent Bible Study Videos on our YouTube page.

God is bringing us into a new chapter of ministry at St. Luke's. We are being energized for ministry through relevant, sincere, and joyful worship. And others we know are being prepared for us to invite, bring, and welcome them to the St. Luke's community. Let's receive God's grace this month and offer it to others.

For Christ,
Mike Gillen

Grief Luncheon *by Jean Bailey*

Grief luncheon will be March 4th at noon at Tuckers on Union Road.

Hope all can make it.

Any questions please call Jean at 314-660-2912.

Piecemakers *by Karen Anderson*

Piecemakers will continue to meet every Wednesday at 9:00 am in the quilt room and Gospel Cafe. We are really thrilled to be joined by the knitters and crocheters of the Prayer Shawl Ministry. Our fellowship time together continues to grow. If you need socialization or just some time to chat with friends, come and join us. We will let you sit and chat or "find" you a task. At this time, we are finalizing the items needed for our layettes to be donated to Feed My People and Lifewise.

HOLY WEEK SCHEDULE

Holy Week begins with Palm Sunday on March 24.

Invite family and friends to the Holy Week worship services at St. Luke's United Methodist Church:

March 24, 10:00 am	Palm Sunday worship
March 28, 7:00 pm	Maundy Thursday worship
March 29, 7:30 pm	Good Friday worship
March 31, 8:30 am and 10:00 am	Easter Sunday worship

INVITABLE EVENTS

Weekly

- **SUNDAY WORSHIP at 10AM**
- **SEW N'SEWS**
Mondays, 9AM
Fellowship Hall
- **PIECEMAKERS QUILTING AND PRAYER SHAWL MINISTRY**
Wednesdays, 9-11 AM,
Fellowship Hall
- **RE-SELL-IT SHOPPE**
Thursdays, 9:30 - 3:30 PM
Saturdays, 10 AM - 2 PM
Parkhurst Gym
- **FISH FRY**
Fridays, 4:30-7 PM,
In the Parkhurst Gym

Monthly

- **GRIEF SUPPORT LUNCHEON**
March 4th at noon at
Tuckers on Union Road.

**Have you invited
anyone to
St. Luke's lately?**

THANK YOU - We would like to express our gratitude and appreciation to our church family and wonderful friends for the outpouring of love and support at the passing of my dad, George Wiesehan. We felt surrounded by your prayers all through his diagnosis of pulmonary fibrosis. He wanted to be able to be with friends at church, and asked often about many of you by name. We want to thank each of you that made special visits to his home with meals to share and to talk, and then visits at the hospital. I can't express how much this meant to us and to him. Thanks to Pastor Gillen for home visits and help at this time also. We appreciated and enjoyed the wonderful luncheon after the service where we could be with family. God Bless you all and thank you for being there for us. Sincerely, Sandy and John Newman, Joan Wiesehan, Beth and Dave Thurau, Madeline, Samantha, and Nathan

New Staff Person

The Staff Parish Relations Committee, the TSF team and the Pastor are announcing a staff change. Maya Quintana has concluded her time as executive assistant. We thank her for the year and a half of service to the church. Maya's last day was Friday, February 16.

The SPRC is also announcing the hiring of Stacy McGlasson to be the executive assistant at St. Luke's, beginning Monday, February 19. Stacy served as Director of Administration and Communication at Cornerstone United Methodist Church from March 2011 to August 2023. We welcome Stacy to the church staff.

A little background on Stacy. She's been married for thirty years (Doug), she had two adult daughters. She lives in O'Fallon, MO. She's always felt that working in a church was a calling for her and she's excited to be collaborating with Dr. Mike, the leaders and congregation of St. Luke's. Welcome, Stacy!

Stacy McGlasson's email address is: stacymcglasson@gmail.com.

WELCOME STACY MCGLASSON

ST LUKE'S NEW EXECUTIVE ASSISTANT



Attention: False Text Messages (“Smishing”)

Recently several St. Luke's members received scam texts, called “smishing.” The texts appeared to come from our Pastor, but he did not send them. The phone number wasn't the pastor's, the text asked people to buy gift cards for him (which Dr. Mike would never ask you to do), and it was unusually signed (“Rev. Mike Gillen”); our Pastor never refers to himself in texts or emails as “Rev.”

Here are some clues that a text is a scam:

*The phone number was not from a known person

*The text has an unusual setup, usually saying someone is in need but the texter is busy, out of town, or doesn't have the money for whatever is needed.

*You're asked to buy gift cards, then send the gift card numbers in a separate text.

If you receive what you think is a scam text or email, call the person you think is sending you the message to see if it is them. If it is a scam or fraud attempt, contact the Missouri State Attorney's office.

Consumers can report any incidents of consumer scams and fraud by calling the Missouri Attorney General's Consumer Protection hotline at: 1-800-392-8222.

Lent Bible Study Videos on Mondays

Every Monday during the season of Lent, a Bible study video will be released on St. Luke's YouTube channel and a link provided on our Facebook page. Our Pastor, Mike Gillen, and the Pastor of New Hope United Methodist Church, Michelle Shoger, are discussing Old and New Testament passages focused on a Holy Lent. Invite someone to watch with us.

UMM Spotlight *by John Newman*

JESUS – Final Words from The Cross

“Father, forgive them; for they do not know what they are doing.”

“Today you will be with me in Paradise.”

*To His Mother he said, “Woman behold your son!”
– and to his disciple John he said “Behold your mother!”*

“My God, my God, why have you forsaken me?”

“I thirst.”

“It is finished.”

“Into your hands I commit my spirit.”

Keep these words in Mind during this Lenten Season

The St. Luke’s UMM is meeting next on March 4, 2024 at 6 pm. Joe Schneringer – President is inviting you to attend and help with the planning of new events for **2024**. So please mark your calendar to attend our March meeting.

Our 2024 calendar has the following highlights:

April 6th – Trivia Night

April 27th – Family Fishing Fair at Suson Park – A Free event to all that attend.

June 2nd – Grizzlies Baseball Game 5:30 PM

June 16th – Father’s Day Appreciation

Please mark your calendars.

SUNDAY SCHOOL

**9 AM & after
worship service
every Sunday**



Join us before and after the church service for Sunday School!

We have five classes to offer:

Children ages 5 thru 11 meet in room 220 on the second floor of the Parkhurst building at 9 AM.

Youth ages 12 thru 18 meet in the Youth Room also on the second floor of the Parkhurst building after the service.

Three adult classes -

The Seekers meet in room 215/217 at 9 AM.

The Open Door Class meets in the Parlor (room 211) after the service.

Stirring The Pot meets downstairs in room 215/217 after the service.

ATTENTION LADIES! *by Jean Bailey*

I wear a dress and a hat during the Lenten season to honor our Lord Jesus Christ. I would like to challenge our ladies to do the same. It's only 6 more weeks. Come on you can do it!

I get many comments on my hats and attire. Plus our men folk like having a beautiful lady on their arm.

P.S. If anyone needs help with hats, please let me know.



United Women in Faith

Faith - Action - Sisterhood



United
Women
in Faith

Our next UWF meeting will be on **Monday, March 4, 2024 at 7:00 p.m.** with the program being our “Call to Prayer and Self-Denial”. A light sandwich meal will be at 6:00 p.m. in the Gospel Café. We would love for any women of the church and their friends to join us for our monthly meetings. So Ladies invite your friends to join you for an evening of friendship and devotions.

United Women in Faith Sunday will be **Sunday, March 3, 2024**. At this service we will do our **Annual Candleburning**. Please look for the forms and information in the Welcome Center to give a donation in honor of or in memory of someone. The amount this year is \$11.23 per minute to fund Missions of the United Women in Faith around the World. Any amount can be given and donations are added together to burn the candle for the designated number of minutes. Thank you for your support.

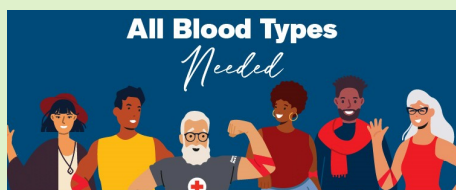
Sandy Newman, President UWF

March Monthly Mission

“Blood Drive”

For the month of March we will host a Blood Drive with the American Red Cross, on Monday, March 4 from 2 pm to 6 pm.

To make an appointment, please call Sandy Newman at 314-892-5595 or visit RedCrossBlood.org (Sponsor code: STLUKESUMC).



Blood Drive **St Lukes UMC**

Gym
2761 Telegraph Road
Saint Louis, MO 63125
Monday, March 4, 2024
2:00 p.m. to 6:00 p.m.



Give-A-Meal-A-Month For Feed My People

(Bring donations to the Collection Room off of Fellowship Hall)

March

Main Menu

Canned Beef or Chicken Meals (hearty stews, chili, soups)
Any Canned Vegetable (low sodium)
Any Canned Fruit/Applesauce
Gelatin (Jello), Pudding mix (any flavor) Powdered Milk or Soy Milk,
(shelf stable) All Purpose Flour, Sugar

Additional Items -

Cold Cereal or Oatmeal
Sugar Free or Low Sugar Juices (plastic bottles) Peanut Butter, Jelly,
Mac 'n Cheese
Toothpaste, toothbrushes, dental floss, soap, shampoo/conditioner,
deodorant, razors

MARCH 2024

Sun	Mon	Tue	Wed	Thu	Fri	Sat
3 9a.m. Sunday School 10a.m. UWF Sunday 11a.m. Fellowship 11a.m. Sunday School 4:30 - 6:30p.m. Basketball	4 9a.m. Quilters 10:30a.m. AA Meeting 12p.m. BLOOD DRIVE 5:30p.m. PG RESERVED 6p.m. UMM/UWF Meeting 7:30p.m. AA Meeting	5 10a.m. AA Meeting 5:30p.m. AA Meeting 6:30p.m. Choir Practice 7p.m. PG RESERVED 7:30p.m. AA Meeting 8p.m. Handbells Practice	6 9a.m. Piece-makers and Prayer Shawl Ministry 5:30p.m. PG RESERVED 6p.m. AA Bookstudy 7p.m. NA Group	7 9:30a.m.-3:30pm Re-Sell-It Shoppe 5:30 p.m. PG RESERVED 6p.m. Praise Band 7p.m. Al anon Meeting	8 10a.m. AA Meeting 4p.m. Fish Fry 7p.m. AA Meeting	9 10a.m. AA Meeting 10a.m.-2p.m. Re-Sell-It Shoppe
DAYLIGHT SAVINGS TIME 9a.m. Sunday School 10a.m. Worship Service 10a.m. Bethesda Worship 11a.m. Fellowship 11a.m. Sunday School 4:30 - 6:30p.m. Basketball	11 9a.m. Quilters 10:30a.m. AA Meeting 6p.m. PG RESERVED 7:30p.m. AA Meeting	12 10a.m. AA Meeting 5:30p.m. AA Meeting 6:30p.m. Choir Practice 7p.m. PG RESERVED 7:30p.m. AA Meeting 8p.m. Handbells Practice	13 9a.m. Piece-makers and Prayer Shawl Ministry 5:30p.m. PG RESERVED 6p.m. AA Bookstudy 7p.m. NA Group	14 9:30a.m.-3:30pm Re-Sell-It Shoppe 5:30 p.m. PG RESERVED 6p.m. Praise Band 7p.m. Al anon Meeting	15 10a.m. AA Meeting 4p.m. Fish Fry 7p.m. AA Meeting	16 7:30a.m. PG RESERVED 10a.m. AA Meeting 10a.m.-2p.m. Re-Sell-It Shoppe
ST. PATRICK'S DAY 9a.m. Sunday School 10a.m. Worship Service 10a.m. Bethesda Worship 11a.m. Fellowship 11a.m. Sunday School 4:30 - 6:30p.m. Basketball	18 9a.m. Quilters 10:30a.m. AA Meeting 6:30p.m. TSF Team Meeting 7:30p.m. AA Meeting	19 10a.m. AA Meeting 5:30p.m. AA Meeting 6:30p.m. Choir Practice 7p.m. PG RESERVED 7:30p.m. AA Meeting 8p.m. Handbells Practice	20 9a.m. Piece-makers and Prayer Shawl Ministry 6p.m. AA Bookstudy 7p.m. NA Group	21 9:30a.m.-3:30pm Re-Sell-It Shoppe 6p.m. Praise Band 7p.m. Al anon Meeting	22 10a.m. AA Meeting 4p.m. Fish Fry 7p.m. AA Meeting	23 10a.m. AA Meeting 10a.m.-2p.m. Re-Sell-It Shoppe 11a.m.-3:30pm Community Easter Event
24 9a.m. Sunday School 10a.m. Worship Service 10a.m. Bethesda Worship 11a.m. Fellowship 11a.m. Sunday School 4:30 - 6:30p.m. Basketball	25 9a.m. Quilters 10:30a.m. AA Meeting 5:30p.m. PG RESERVED 6:30p.m. Executive Team 7:30p.m. AA Meeting	26 10a.m. AA Meeting 5:30p.m. AA Meeting 6:30p.m. Choir Practice 7:30p.m. AA Meeting 8p.m. Handbells Practice	27 9a.m. Piece-makers and Prayer Shawl Ministry 5:30p.m. PG RESERVED 6p.m. AA Bookstudy 7p.m. NA Group	28 MAUNDY THURSDAY 9:30a.m.-3:30pm Re-Sell-It Shoppe 6p.m. Praise Band 7p.m. Al anon Meeting 7p.m. Maundy Thursday	29 GOOD FRIDAY 8:30a.m. AA Meeting 10a.m. AA Meeting 4p.m. Fish Fry 7p.m. AA Meeting 7:30p.m. Good Friday Worship	30 10a.m. AA Meeting 10a.m.-2p.m. Re-Sell-It Shoppe
EASTER SUNDAY 8:30a.m. Worship Service 9a.m. Sunday School 10a.m. Worship Service 10a.m. Bethesda Worship 11a.m. Fellowship 11a.m. Sunday School 4:30 - 6:30p.m. Basketball						



You're invited to the **St. Luke's Lenten Friday Fish Fry!**

2761 Telegraph Road, St. Louis, MO 63125

In the Parkhurst Gym **every Friday**

February 16 through March 29 from 4:30—7 PM

2 Piece Dinner with 2 Sides: \$15

1 Piece Dinner with 2 Sides: \$10

Fish Choices:

Baked Cod, Fried Cod, Catfish, Shrimp and Jack Salmon

Sides:

Cole Slaw, French Fries, Mac n' Cheese,
Spaghetti, Hush Puppies, and Green Beans

Dessert:

Specialties from St. Luke's Bakers

Skip the line and pre-order by 2:30 on Friday at:

WWW.STLSTL.ORG

ST. LUKE'S FIRST SQUARE DANCE SHINDIG

Dance in a square; Make a circle of friends

Saturday, April 27th

Starting at 7 PM

\$15 a ticket

Bring your own munchies!

Call ahead so we know

you're coming at

(314) 892-5595

Ya'll will have a barrel of fun!



Healthy Ministries



"Dear friends, let us love one another, for love comes from God. Everyone who loves has been born of God and knows God." 1 John 4:7 (NIV)

I hope everyone stayed safe and warm during our little surprise snow fall and spurt of cold weather. It's so hard to believe that it's almost March already.

We have several church members that are homebound, in nursing homes or assisted living facilities. It's up to us to find a way to bring the church to those that are unable to be with us in person. Don't forget to reach out and connect with those we haven't seen for a while by phone, cards or letters so they will know you are thinking of them and praying for them. That personal touch by one of their church family calling them or sending a card or letter adds that little extra reminder that they haven't been forgotten.

There are no birthdays among our homebound in March. An updated list of the names, addresses, phone numbers and birthdates of all of our homebound friends is available in the church office. Please use the list to keep in contact with them. And, don't forget to keep our entire St. Luke's family, in your hearts by including them in your daily prayers.

If you are contacting any of our members that have been unable to attend services in person, please let the office know that you have talked with them and how they are doing.

PRAYER LIST

Ron Feddersen
Family of Kathy Hicks
Dee Ryan

Janet Berkley
Kathy Brummett
Family of Matias Avalos
Family of Marty Pozzo
Family of George Wiesehan
Sue Harris
Freya Koch
Elisa Lahrman
Tom Munster
John Oberlohr
Eli Robinson

Challie Allison
Judy Aubuchon
Tom Diekhaus
Linda Driskell
Coleen Eggemeyer
Jackie England
Geoffrey Fasoldt
Bridget Fischer
Ashley Halker
Althea Hart
Tippie Heimos
Connie Laramie
Dennis Ledgerwood
Caroline Lewis
Janean Little

Marlene Loesekam
Dot McCoy
Anita Phillips
Cheryl Rothe
Charlie Smith
Corey Tedrick
Renee Wieggers
Georgia Wymer
Bill Zimmerman
Sheila Zundel

MARCH BIRTHDAYS

3/3—Nick Rothe

3/6—Joe Schneringer

3/10—Richard Mehigh

3/10—Pat Shone

3/11—Madison Howard

3/11—Grace Loesekam

3/13—Joan Caldwell

3/13—Jim Whalen

3/14—Gale Going

3/14—Cindy Montgomery

3/15—Maureen Sailor

3/18—Greg Loesekam

3/19—Patricia Braun

3/20—Stephen Lampe

3/23—Bob Brummet

3/24—Mary Chard

3/24—Elissa Loesekam

3/25—Stacey Lampe

3/27—John Mountain

3/27—Reginah Mubonani

3/28—Tom Schmidt

3/29—Maddison Rolan

3/30—Sandy Newman

MARCH WEDDING ANNIVERSARIES

3/8—Dennis and Nicki Kerperien

3/14—Ted and Pam Fournier

3/15—Bill and Michelle Jones

3/28—Dan and Cheryl Rothe

PRAYER WARRIORS



We are looking for individuals or couples to staff the Prayer Room on a rotating basis on Sundays. You would be in the Prayer Room for 15 minutes before and 10 Minutes after the Worship service. If you would be interested in being a Prayer Warrior, please contact Shari Scott.

Ink Cartridges

Have old ink cartridges you need to dispose of? St. Luke's recycles them! Bring your used ink cartridges to St. Luke's and leave them in the collection room. We will gather them and then ship them off. All proceeds help the missions of the church!



What do we really own? *by Pam Jones*

‘Naked I came from my mother’s womb, and naked shall I return there; the Lord gave, and the Lord has taken away; blessed be the name of the Lord.’ --Job:1:21

There’s the joke about the nosy neighbor attending a rich woman’s funeral. Peering into the coffin with a friend, he asked, “How much money did she leave?” The friend smiled and replied, “All of it, of course!”

As Job laments, we come into the world naked and leave the same way. We may be dressed in our best clothing on our way out, but we take it to the grave, not the afterlife.

The joke and Job reveal a basic concept of stewardship: We don’t really own anything. We may take possession of it for a period of time, but we eventually leave it for others.

Yet we spend so much of our energy and life accumulating more and more – as if we were going to have it forever, as if we were going to live forever. The danger is that absorbed with accumulating wealth, we shortchange the most valuable treasures – loving the Lord our God with all our being and loving our neighbors as ourselves.

That’s why the Bible consistently warns us about wealth. Jesus repeatedly points out the pitfalls. Money and possessions can turn us inward, stunting our growth and preventing us from being the people God created us to be.

Generosity is the preventative cure for this malady. The Bible counsels that tithing – giving away 10 percent of our income – is a good benchmark for faithful giving (although on several occasions Jesus told his disciples to give away ALL their possessions).

Giving 10 percent, or any amount substantial enough to be sacrificial, is a declaration that you are free from the power that money might have over you. Because however much money you can accumulate in life, you will be like the rich woman in the joke: You will leave it all.



And whatever you ask in prayer, you will receive, if you have faith."

Matthew 21:22 (ESV)

Our Prayer Room is always open.

You may use it to pray privately or there will be someone available to pray with you.

"Our prayers may be awkward. Our attempts may be feeble. But since the power of prayer is in the one who hears it and not in the one who says it, our prayers do make a difference."

Max Lucado

MAURINE ABEL RE-SELL-IT SHOPPE QUARTER SALE

Gym Saturday, April 6
9:00am - 2:00 pm

Gym Thursday, April 11
9:00am - Noon

If anyone would be able to help during any part of the setup on Thursday, April 4, 10:00am or to help pack up and/or take down on Thursday, April 11, noon, we would be grateful. Please ask Kay or Deb if you have any questions.

ST. LUKE'S UNITED METHODIST CHURCH

2761 Telegraph Road

St. Louis, MO 63125

Address Service Requested

Church Office: 314-892-5595

DATED MATERIAL

10AM Worship Service

**Service is recorded and posted onto the St. Luke's
YouTube Page at 11:30 every Sunday.**

Pastor: Rev. Dr. Mike Gillen

Cell Phone: 314-947-0072

Executive Assistant: Stacy McGlasson

Treasurer: Cheryl Rothe

Music Director: Tom Schmidt

Minister of Worship: Rev. Bruce Walker



Email: michaelgillen@att.net

stacymcglasson@gmail.com



Facebook.com/SaintLukesUMC



follow us on
facebook

We want you to join in
the conversation on
Facebook!